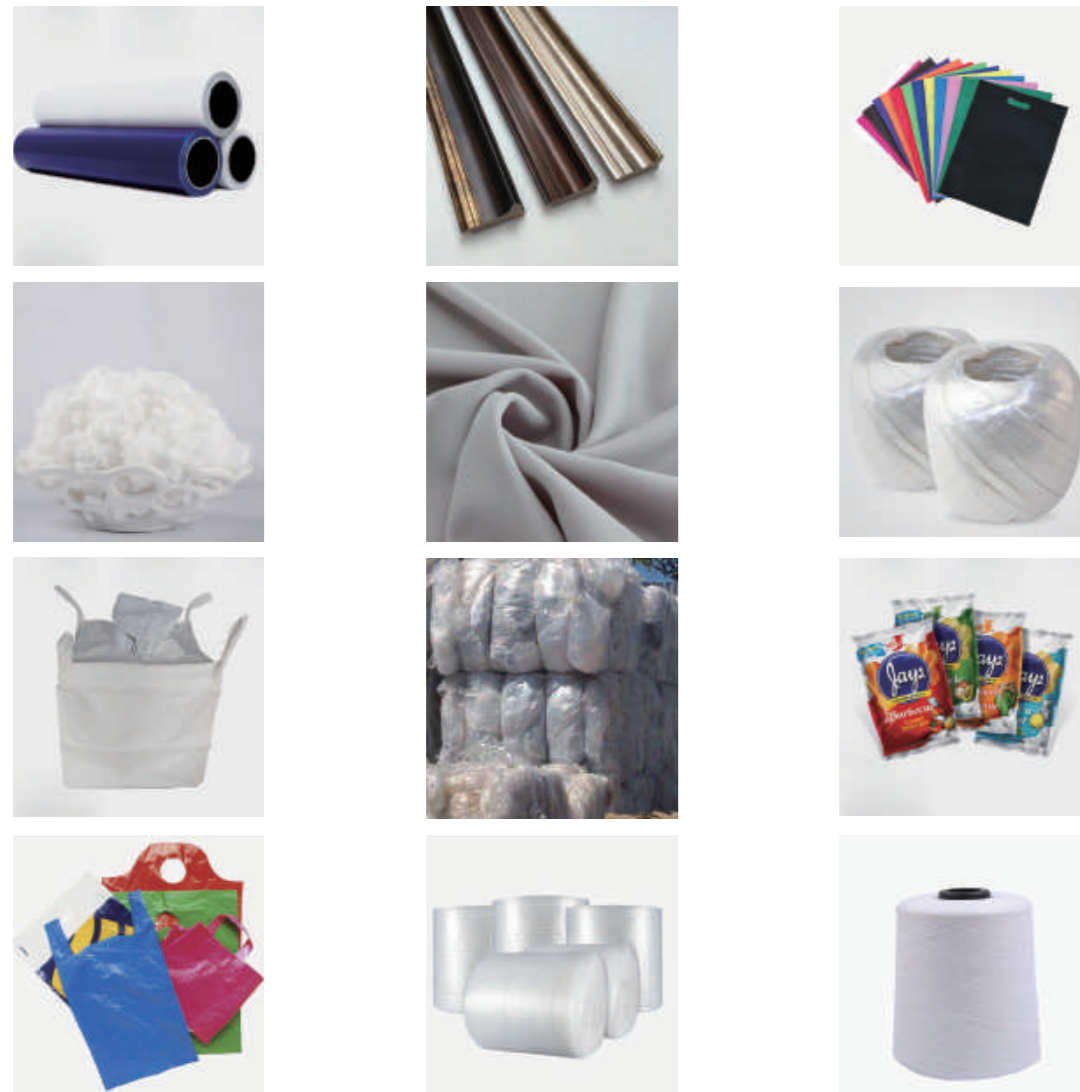
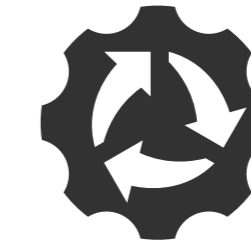
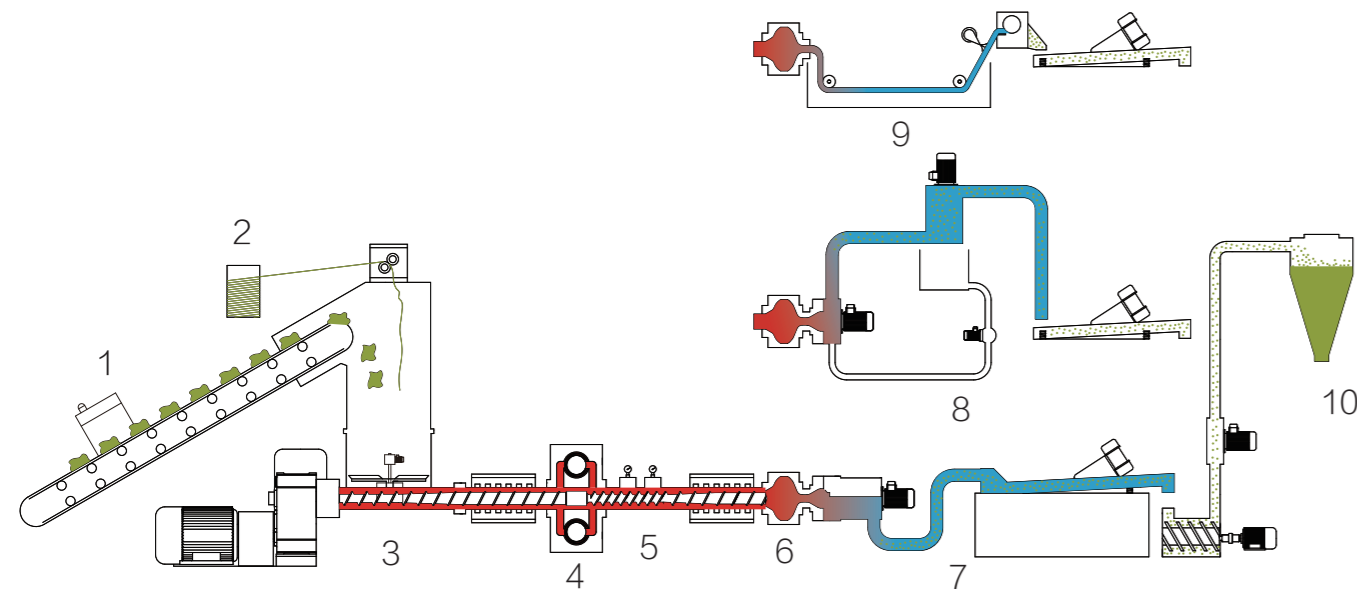
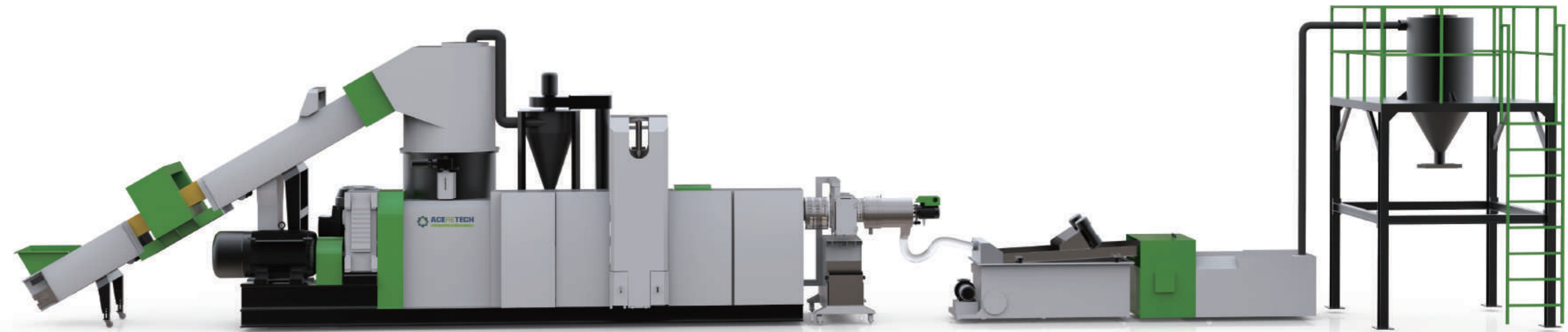


| Model Machine size | Średnica ślimaka Diameter of screw (mm) | L/D | Moc silnika Motor power (KW) | Wydajność Throughput rate (kg/h) | |
|-----------------------|--|-----|---------------------------------|-------------------------------------|----------|
| ADS100/120 | ASE-100 | 100 | 28 | 110 | 260-350 |
| | ASE120 | 120 | 10 | 30 | |
| ADS120/150 | ASE-120 | 120 | 28 | 132 | 330-420 |
| | ASE150 | 150 | 10 | 37 | |
| ADS150/180 | ASE-150 | 150 | 28 | 185/200 | 550-650 |
| | ASE180 | 180 | 10 | 45 | |
| ADS180/200 | ASE-180 | 180 | 28 | 250/315 | 800-1000 |
| | ASE200 | 200 | 10 | 55 | |

| Model Machine size | Średnica ślimaka Diameter of screw (mm) | L/D | Moc silnika Motor power (KW) | Wydajność Throughput rate (kg/h) |
|-----------------------|--|-----|---------------------------------|-------------------------------------|
| ASE-80 | 80 | 32 | 55 | 120-160 |
| ASE-100 | 100 | 32 | 110 | 260-350 |
| ASE-120 | 120 | 32 | 132 | 330-420 |
| ASE-150 | 150 | 32 | 185/200 | 550-650 |
| ASE-180 | 180 | 32 | 250/315 | 800-1000 |



ACS PRO



- 1. Podajnik taśmowy / Belt conveyor
- 2. Walce ciągnące / Hauling roller
- 3. Wyłaczarka / Extruder
- 4. System filtracji / Filtration unit
- 5. System odgazowania / Vacuum Voltallization
- 6. System filtracji / Filtration unit
- 7. Cięcie w pierścieniu wodnym / Water ring pelletizing unit
- 8. Cięcie podwodne / Under water pelletizing unit
- 9. Cięcie na nitki / Strand pelletizing unit
- 10. Silos / Storage silo

| Model size | Wydajność kg/h dla poszczególnych materiałów / Output Capacity for common materials(for reference) | | | | | | | | | |
|--------------|--|------|------|------|-------------|------|-------------|------|-----------|------|
| | LDPE/LLDPE | | HDPE | | PP/BOPP/OPP | | HIPS/EPS/PS | | BOPET/PET | |
| | min | max | min | max | min | max | min | max | min | max |
| ACS-Pro 1008 | 400 | 500 | 320 | 450 | 350 | 450 | 450 | 550 | 500 | 600 |
| ACS-Pro 1414 | 900 | 1000 | 700 | 900 | 850 | 1000 | 850 | 1100 | 900 | 1150 |
| ACS-Pro 1616 | 1300 | 1500 | 950 | 1300 | 1100 | 1400 | 1100 | 1500 | 1200 | 1600 |
| ACS-Pro 1828 | 1800 | 2000 | 1300 | 1650 | 1600 | 1900 | 1600 | 2000 | 1800 | 2100 |